

CYCLONE 150

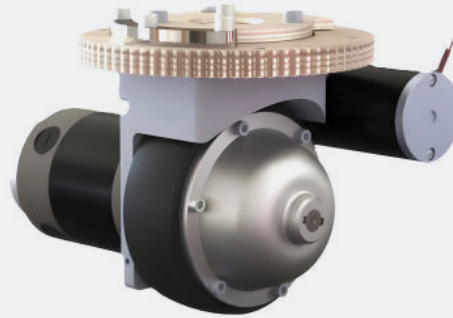
Steerable Wheel Drive



Floor
Care



Mobile Robots
& AGVs



FEATURES

Sealed drive system: Rugged; compact; integrated steer motor

Optional components: Electromagnetic power-off brake, encoder connectors

Voltage: 24V DC

Wheel: Integral 6 inch (152.4 mm) diameter

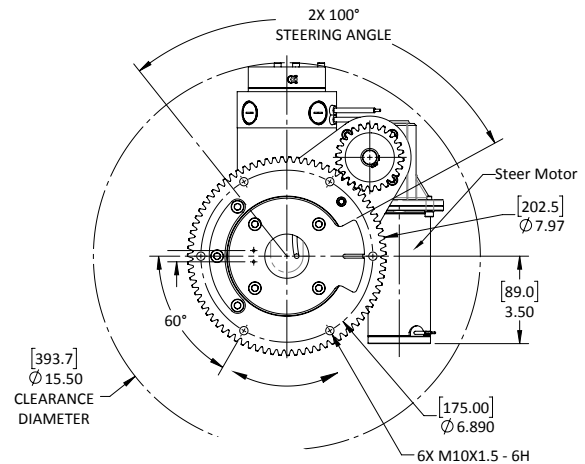
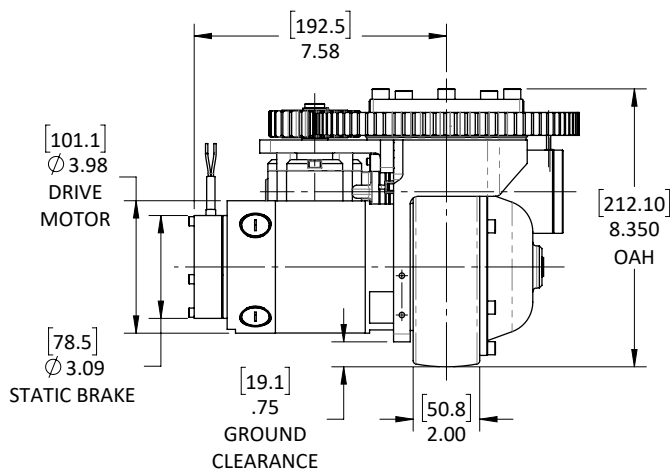
Gearing: Planetary

Brake options available: 6 Nm

Motor options available: Permanent Magnet, Brushless

PERFORMANCE EXAMPLE

Sample Application Data			
Maximum Wheel Load	500 lbs. (227 kg)	Motor Type	Permanent Magnet (PMDC)
Rated Towing Weight	1720 lbs. (780.18 kg)	Drive Gear Ratio	20:1
Rated Speed on Level Ground (Loaded)	150 ft/min (45.720 m)	Wheel Material	Polyurethane
Maximum Speed	190 ft/min (57.912 m)	Rated Current Draw (S2 - Continuous)	13A

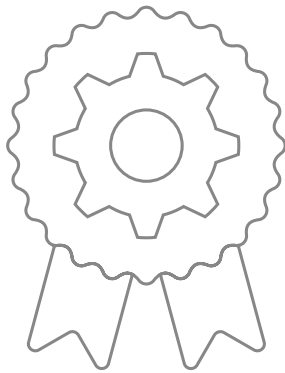




RESULTS.
DRIVEN.

Lasting solutions to drive your machines. More than industrial designers and engineers, we're a team of passionate problem solvers. ASI Drives: Gear drive systems for battery powered machines up to one ton.

OUR CUSTOMERS HAVE BEEN WITH US FOR OVER **15 YEARS ON AVERAGE BECAUSE OF OUR:**



DEEP EXPERTISE:

Creating over 740 tailored engineered solutions

Offering cost sensitive designs with manufacturing efficiencies

A history of innovation recognized with 7 awarded patents

In-house gear manufacturing offers supply chain predictability



OUR 40-YEAR COMMITMENT:

Excellent customer service

"Best in class" partnership with OEM industry leaders

Our entrepreneurial size ensures personal executive level accountability and responsiveness



DEEP INDUSTRY KNOWLEDGE & FOCUS:

Insights and solutions to your specific challenges & opportunities

We know your competitive landscape

EXPERIENCE THE DIFFERENCE OUR DEDICATION TO INNOVATION, QUALITY AND SERVICE MAKES.

Contact us at sales@asidrives.com to explore how we can quickly solve your most pressing challenges.

